



Certificate of Analysis

Compliance Test

Client Information:

Jag Alliance, LLC
83 Knight Boxx Rd.
Orange Park, Florida 32065

Batch # 17082
Batch Date: 2025-02-21
Extracted From: Hemp

Test Reg State: Florida

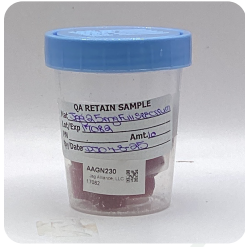
Production Facility: JAG Alliance, LLC
Production Date: 2025-02-21

Order # JAG250324-010001
Order Date: 2025-03-24
Sample # AAGN230

Sampling Date: 2025-04-10
Lab Batch Date: 2025-04-10
Completion Date: 2025-04-21

Initial Gross Weight: 55.928 g
Net Weight: 40.928 g

Number of Units: 1
Net Weight per Unit: 4092.800 mg



Product Image



Potency
Tested



Potency 10

Specimen Weight: 1522.800 mg

Tested

SOP13.001 (LCUV)

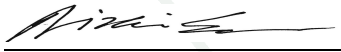


Potency Summary

Total Active THC None Detected		Total Active CBD 0.648% 26.521 mg	
Total CBG 0.054% 2.210 mg		Total CBN None Detected	
Total Cannabinoids 0.702% 28.731 mg			

Pieces For Panel: 10

Analyte	LOD (mg/g)	LOQ (%)	Result (mg/g)	(%)
CBD	5.40E-5	0.015	6.480	0.648
CBG	2.48E-4	0.015	0.540	0.054
CBC	1.80E-5	0.015	<LOQ	<LOQ
CBDA	1.00E-5	0.015	<LOQ	<LOQ
CBDV	6.50E-5	0.015	<LOQ	<LOQ
CBGA	8.00E-5	0.015	<LOQ	<LOQ
CBN	1.40E-5	0.015	<LOQ	<LOQ
Delta-9 THC	1.30E-5	0.015	<LOQ	<LOQ
THCA-A	3.20E-5	0.015	<LOQ	<LOQ
THCV	7.00E-6	0.015	<LOQ	<LOQ
Total Active CBD			6.480	0.648
Total Active THC			<LOQ	<LOQ


Aixa Sun Lab Director/Principal Scientist
D.H.Sc., M.Sc., B.Sc., MT (AAB)



Definitions and Abbreviations used in this report: Total Active CBD = CBD + (CBD-A * 0.877), *Total CBDV = CBDV + (CBDVA * 0.867), Total Active THC = THCA-A * 0.877 + Delta 9 THC, Total THC = THCV + (THCVA * 0.87), CBG Total = (CBGA * 0.878) + CBG, CBN Total = (CBNA * 0.876) + CBN, Total CBC = CBC + (CBCA * 0.877), Total THC-O-Acetate = Delta 8 THC-O-Acetate + Delta 9 THC-O-Acetate, Total THCP = Delta8-THCP + Delta9-THCP, Total Cannabinoids = Total percentage of cannabinoids within the sample. (mg/ml) = Milligrams per Milliliter, LOQ = Limit of Quantitation, LOD = Limit of Detection, Dilution = Dilution Factor, (ppb) = Parts per Billion, (%) = Percent, (cfu/g) = Colony Forming Unit per Gram, (µg/g) = Microgram per Gram, (ppm) = Parts per Million, (ppm) = (µg/g), (aw) = Water Activity, (mg/Kg) = Milligram per Kilogram. ACS uses simple acceptance criteria. Passed - Analyte/microbe is not detected or is at the level below the action limit per FL rule 64ER20-39, 5K-4.036, 5K-4.034. Failed - Analyte/microbe is at the level that equal or above the action limit per FL rule 64ER20-39, 5K-4.036, 5K-4.034. The results apply to the sample as received.

This report shall not be reproduced, without written approval, from ACS Laboratory. The results of this report relate only to the material or product analyzed. Test results are confidential unless explicitly waived otherwise. ACS Laboratory is accredited to the ISO/IEC 17025:2017 Standard.